

COMMUNITY HEALTH ACCESS COALITION



2013 ANNUAL REPORT

*“Helping the Uninsured in the
Eastern Upper Peninsula”*

www.upchac.org



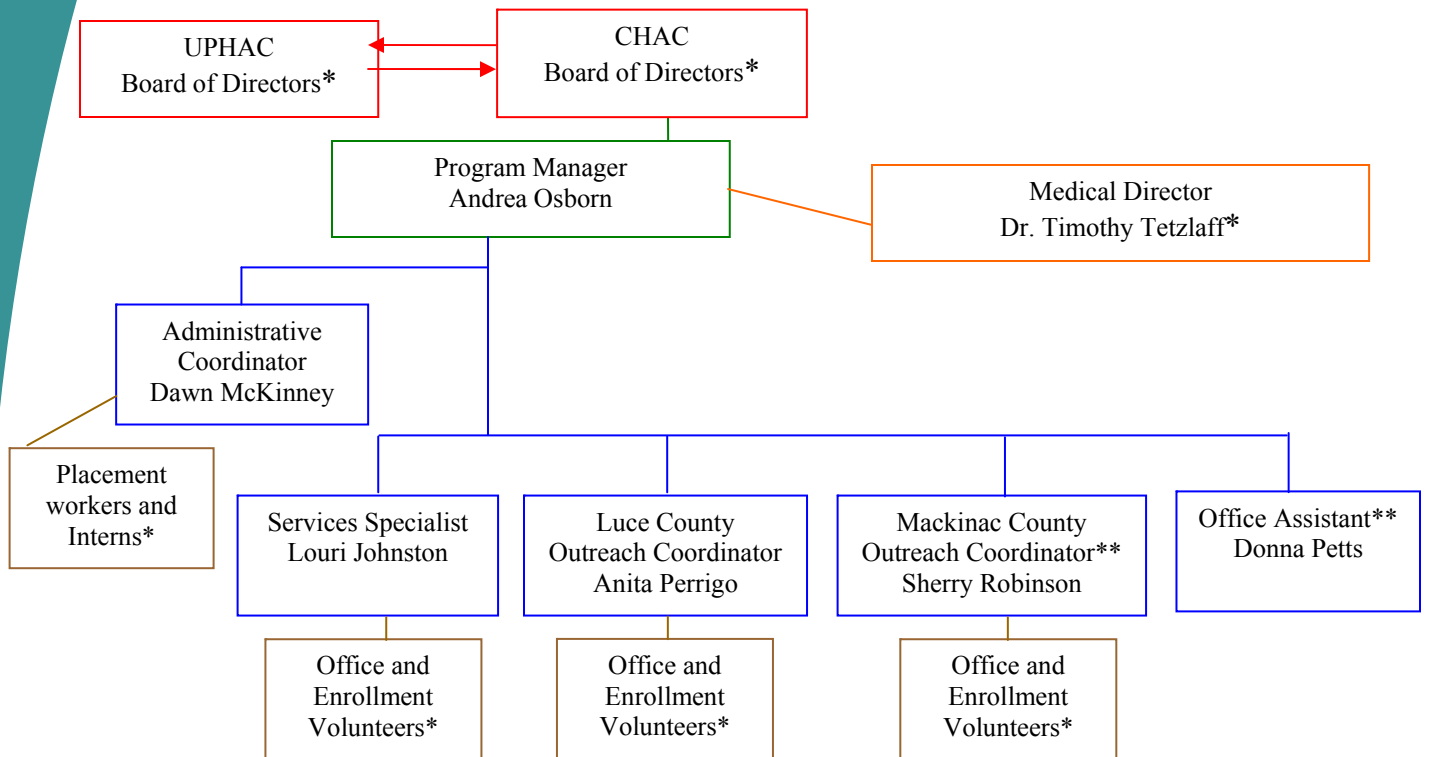
MISSION

Our mission is to provide access to quality health care for the uninsured residents of Chippewa, Luce, and Mackinac Counties by coordinating services of various health care providers to offer an affordable, dignified and enhanced continuum of care.

VISION

All people will have access with dignity to quality, affordable health care.

ORGANIZATIONAL CHART



volunteers *
part-time employee **

Board of Directors

Steve Cannello
Mary LaLonde
Laura Anderson
Jennifer Dunton
Jeffrey Morrison

President
Secretary
Member
Member
Member

Kevin Kalchik
Christine Lundquist
Lauren Calery
Jackie Landis
Andrea Warner

Vice President
Treasurer
Member
Member
Member

Chippewa County
906-635-7483
info@upchac.org

Luce County
906-293-8355
luce@upchac.org

Mackinac County
906-643-7253
mackinac@upchac.org

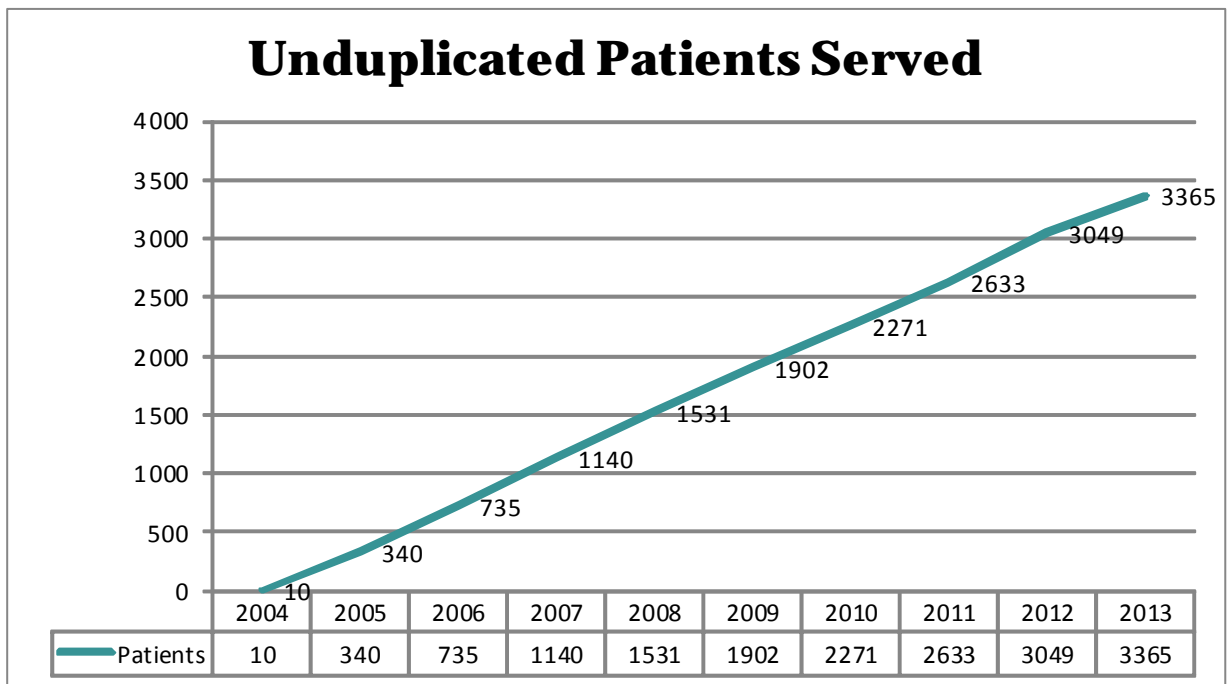
PATIENT INFORMATION

CHAC Patients by Office of Enrollment as of 12/31/2013

	Sault	Newberry	St. Ignace
Enrolled—Active	492	173	120

CHAC Patients by County as of 12/31/2013

	Chippewa	Luce	Mackinac	Other
Enrolled—Active	523	99	156	7



*** Adjusted data due to change in Information Systems***

PROGRAM INFORMATION

- ◆ 1743 Patient Screenings Performed
- ◆ 1654 Patient Appointments Given—Volunteer Program
- ◆ 1143 Patient Enrollments Completed—Volunteer Program
- ◆ 53 Patient Appointments Given—Healthcare Marketplace
- ◆ 9 Patient Enrolled in Insurance Plan —Healthcare Marketplace
- ◆ 2184 Patient Referrals to various community organizations
- ◆ 190 Presentations Given &/or Meetings Attended by CHAC Staff

PHARMACEUTICAL PROGRAM

The CHAC Pharmaceutical Program provides medications to our patients in two ways:

- A generic formulary in which the patient pays a \$5.00 co-pay for a generic medication and the CHAC program pays the balance
- Through the Patient Assistance Programs (PAP) of the Pharmaceutical companies

Donated Pharmaceuticals ~ \$1,623,537.20

PAPs—Pharmaceutical Assistance Programs

Purchased Pharmaceuticals ~ \$ 15,810.39

Purchased generic medications—CVS Caremark

**Total Pharmaceuticals
\$1,639,347.59**

DONATED CARE and SERVICES

\$2,167,507.74 donated hospital/facility care*

\$ 80,057.39 donated physician's office primary care

\$ 243,614.42 donated specialty care

\$ 9,600.00 donated facilities

\$ 34,427.70 donated volunteer hours

\$ 2,535,207.25 Donated Care and Services

*HNJH Primary Care Included

Total Value of Coordinated Care:

Donated Care and Services	\$ 2,535,207.25
<u>Donated Pharmaceuticals</u>	<u>\$ 1,623,537.20</u>
Value of Donated Care	\$ 4,158,744.45
<u>Purchased Pharmaceuticals</u>	<u>\$ 15,810.39</u>
Total Value of Care	\$ 4,174,554.84

99% in Donated Care
1% in Purchased Care

STATEMENT OF OPERATIONS

	<u>Direct</u>	<u>In-Kind</u>	<u>Total</u>
Revenue			
Access Funds	\$189,904		\$189,904
Pink in the Rink	4,825		4,825
United Way	5,463		5,463
MCH - Navigator	5,000		5,000
Medical Services		4,124,317	4,124,317
Interest Income	2,091		2,091
Donations	1,025	34,428	35,453
Fundraising	12,766		12,766
Misc Income	15		15
Total	\$221,089	\$4,158,744	\$4,379,833
Expenses			
Salaries	\$137,899	34,428	\$172,326
Fringe Benefits	32,634		32,634
Equipment & Supplies	9,227		9,227
Travel	7,437		7,437
Purchased Services	15,364		15,364
Medical Services	18,778	4,124,317	4,143,095
Other	35,138		35,138
Depreciation	3,502		3,502
Total	\$259,978	\$4,158,744	\$4,418,722
Net Income available for future programing			-\$38,889

*unanticipated loss of funding resulted in a net loss for 2013

CONTRIBUTERS & VOLUNTEERS

Caremark
 Chippewa Correctional Facility
 City of Sault Ste. Marie
 Dafter Lion's Club
 Faith Lutheran Church—WELCA
 Hantz Financial Services
 Pickford Presbyterian Church
 Soo Co-Op Credit Union
 Stalwart Presbyterian Women
 United Way of the EUP
 War Memorial Hospital

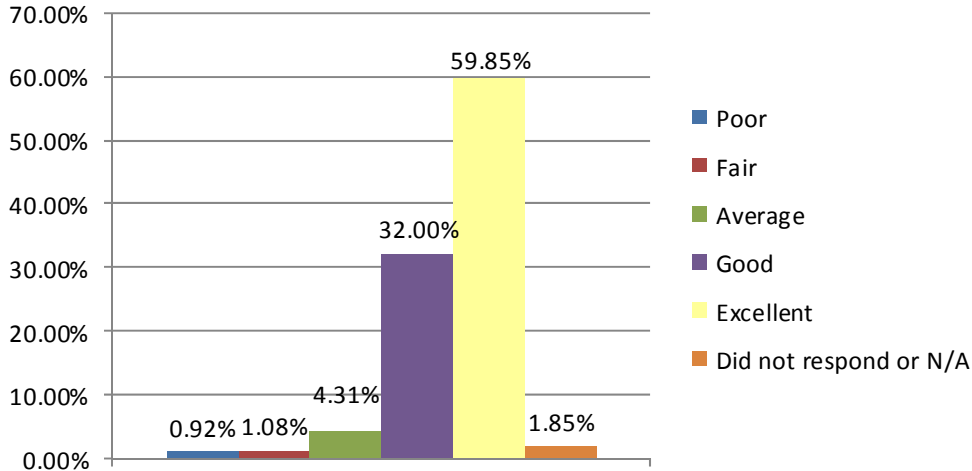
Raulaniesa Aranda
 Denis Berube
 Kathleen Ferguson
 Shelva Johnson
 Donna Maynard
 Lisa Nettleton

Kay Nicholas
 Carol Nygaard
 Kathy Olsen
 Neal Sellick
 Theresa Zylstra

→ 218.50	Office Volunteer Hours
→ 885.00	Enrollment Volunteer Hours
→ 92.50	Board Volunteer Hours
→ 88.25	Fundraising Volunteer Hours
1284.25	Total Volunteer Hours

2013 Client Survey Data

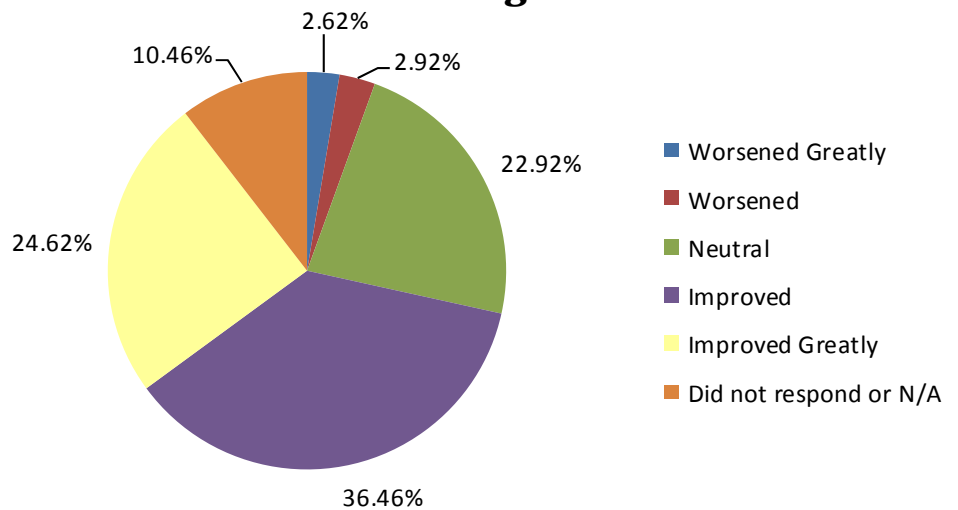
How do you rate your overall experience with CHAC?



91.85% of CHAC clients responded that their experience with CHAC was **Good** or **Excellent**.

84% of CHAC clients indicated that their overall health remained the same or improved since enrolling with CHAC.

How would you rate your overall health since enrolling into CHAC?



Patient Quotes

“I really appreciate all the hard work & dedication of all people involved in CHAC. During these difficult times you have relieved much of my stress. Thank you.”

“Wonderful Program! Everyone is helpful and patient.”

“It’s been very helpful to me. Without receiving services I would not have been able to afford any of the care or medicines I needed.”