

COMMUNITY HEALTH ACCESS COALITION



2011 ANNUAL REPORT

*“Helping the Uninsured in the
Eastern Upper Peninsula”*

www.upchac.org

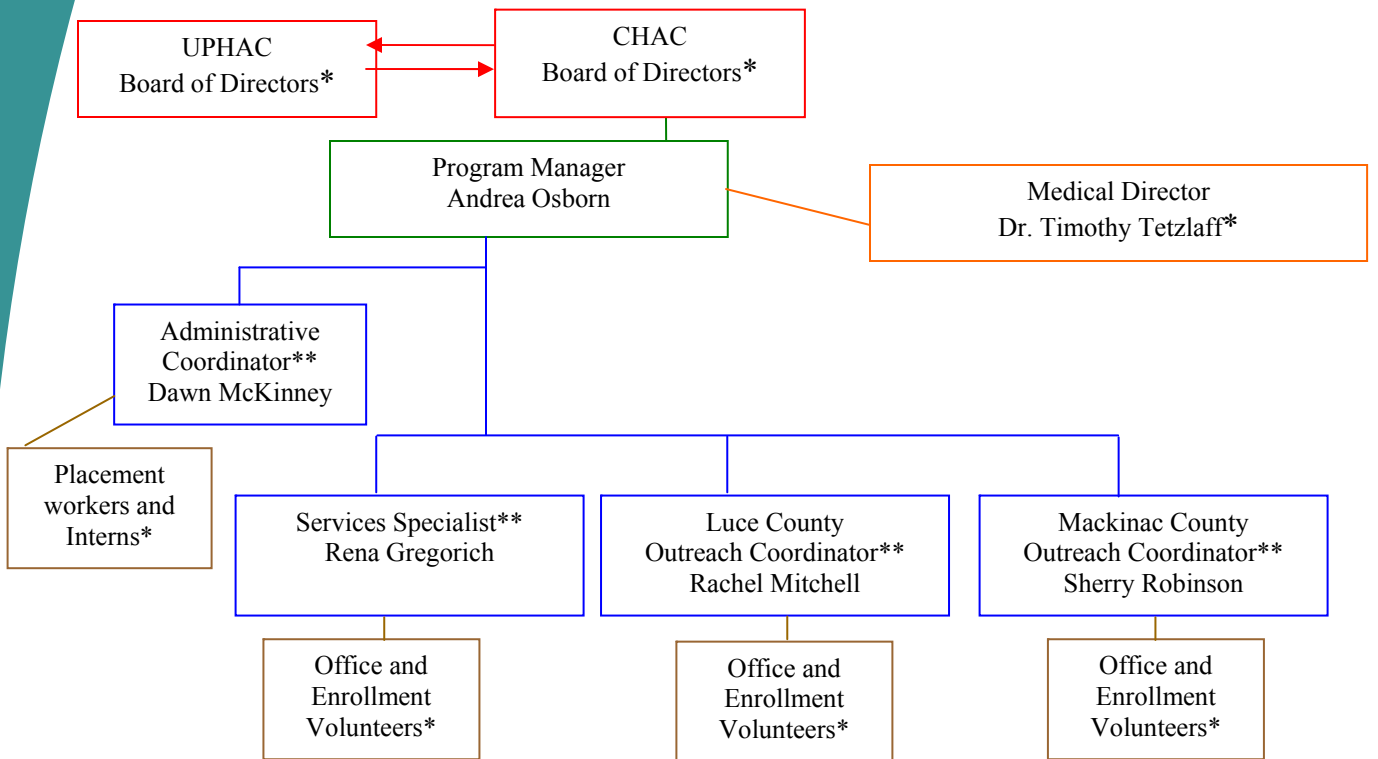
MISSION

Our mission is to provide access to quality health care for the uninsured residents of Chippewa, Luce and Mackinac County by coordinating services of various health care providers to offer an affordable, dignified and enhanced continuum of care.

VISION

All people will have access with dignity to quality, affordable health care.

ORGANIZATIONAL CHART



volunteers *
part-time employee **

Board of Directors

Steve Cannello
Barb Reed
Laura Anderson
Jennifer Dunton
Sandy Routhier

President
Secretary
Member
Member
Member

Kevin Kalchik
Christine Lundquist
Lauren Butler
Mary LaLonde

Vice President
Treasurer
Member
Member

Chippewa County
906-635-7483
info@upchac.org

Luce County
906-293-8355
luce@upchac.org

Mackinac County
906-643-7253
mackinac@upchac.org

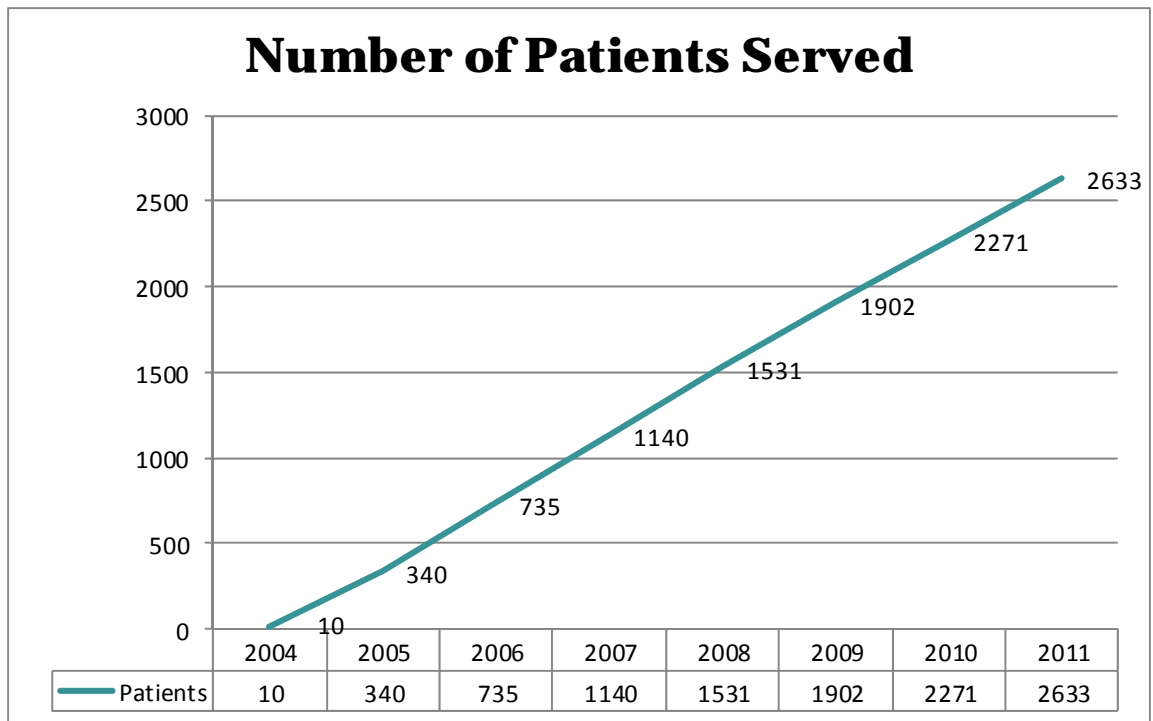
PATIENT INFORMATION

CHAC Patients by Office of Enrollment as of 12/31/2011

	Sault	Newberry	St. Ignace
Enrolled—Active	561	222	159

CHAC Patients by County as of 12/31/2011

	Chippewa	Luce	Mackinac	Other
Enrolled—Active	598	142	213	12



*** Adjusted data due to change in Information Systems***

PROGRAM INFORMATION

- ◆ 1657 Patient Screenings Performed
- ◆ 1609 Patient Appointments Given
- ◆ 1112 Patient Enrollments Completed
- ◆ 1564 Patient Referrals to various community organizations
- ◆ 198 Presentations Given &/or Meetings Attended by CHAC Staff

PHARMACEUTICAL PROGRAM

The CHAC Pharmaceutical Program provides medications to our patients in two ways:

- A generic formulary in which the patient pays a \$5.00 co-pay for a generic medication and the CHAC program pays the balance
- Through the Patient Assistance Programs (PAP) of the Pharmaceutical companies

Donated Pharmaceuticals ~ \$1,395,869.36

PAPs—Pharmaceutical Assistance Programs

Purchased Pharmaceuticals ~ \$ 18,530.40

Purchased generic medications—CVS Caremark

Total Pharmaceuticals

\$1,414,,399.76

DONATED CARE and SERVICES

\$2,021,501.70 donated hospital/facility care*

\$ 68,370.41 donated physician's office primary care

\$ 6,781.00 donated clinic care

\$ 317,940.41 donated specialty care

\$ 7,200.00 donated facilities

\$ 27,233.99 donated volunteer hours

\$ 2,449,027.51 Donated Care and Services

*HNJH Primary Care Included

Total Value of Coordinated Care:

Donated Care and Services \$ 2,449,027.51

Donated Pharmaceuticals \$ 1,395,869.36

Value of Donated Care \$ **3,844,896.87**

Purchased Pharmaceuticals \$ 18,530.40

Total Value of Care \$ **3,863,427.27**

99% in Donated Care
1% in Purchased Care

STATEMENT OF OPERATIONS

	<u>Direct</u>	<u>In-Kind</u>	<u>Total</u>
Revenue			
Access Funds	\$254,506		\$254,506
BCBS	12,857		12,857
MDCH	4,310		4,310
United Way	1,358		1,358
Medical Services		3,817,663	3,817,663
Interest Income	6,764		6,764
Donations	5,578	27,234	32,812
Fundraising	9,550		9,550
Misc Income	575		575
Total	\$295,499	\$3,844,897	\$4,140,396
Expenses			
Salaries	\$139,467	27,234	\$166,701
Fringe Benefits	17,187		17,187
Equipment & Supplies	17,599		17,599
Travel	6,331		6,331
Purchased Services	24,384		24,384
Medical Services	19,411	3,817,663	3,837,074
Other	28,241		28,241
Depreciation	2,642		2,642
Total	\$255,262	\$3,844,897	\$4,100,159
Net Income available for future programing			\$40,237

CONTRIBUTERS & VOLUNTEERS

BC/BS of MI: Strengthening the Safety Net
 C&C Pine Grove
 Caremark
 City of Sault Ste. Marie
 Dafter Lion's Club
 Dawn Parker
 Diane Pepler Resource Center
 Faith Lutheran Church—WELCA
 First Church of Christ
 Justgive.org
 Old Mission Bank
 Pickford Presbyterian Church
 Sault Area Public Schools
 Shelly Berglin
 Soo Co-Op Credit Union
 Stalwart Presbyterian Women
 United Way of the EUP
 War Memorial Hospital

Kelly Belleau
 Denis Berube
 Shannon Bonnell
 Lillian Clark
 Mike Clark
 Darren Faulkner
 Kim Floyd
 Ruth Glowacki
 Nate Gregorich
 Jessie Helfrich
 Shelva Johnson
 Cara Kinnear
 Tracey Laitinen

Mary Jill Leonhardt
 Terry Lovin
 Connie McLeod
 Lisa Nettleton
 Kay Nicholas
 Carol Nygaard
 Kathy Olsen
 Josh Osborn
 Rebecca Secrest-Kloosterman
 Neal Sellick
 Leann Smith
 Mandy Synett
 Yvonne Weaver

→ 428.75

→ 552.50

→ 251.50

→ 54.00

1286.75

Office Volunteer Hours

Enrollment Volunteer Hours

Board Volunteer Hours

Fundraising Volunteer Hours

Total Volunteer Hours

**We are a proud member of
Upper Peninsula Health Access Coalition and of the
United Way of the Eastern Upper Peninsula.**



Recognizing Area “HERO FOR THE UNINSURED” Winners

2007 ~ War Memorial Hospital
2008 ~ Teresa Kowalski
2009 ~ Sault Community Pharmacy
2010 ~ Lynn Kihm
2011 ~ Alice Halsey

The United Way of the EUP Recognition Spotlight
“Honoring those that make our community a great place to be.”

January 2010 ~ CHAC Enrollment Volunteers
February 2010 ~ SHACC
March 2010 ~ Tom & Abby Magnuson
April 2010 ~ Bordertown Chiropractic ~ **Business of the Year**
May 2010 ~ Newberry Senior Citizens
June 2010 ~ Judi’s Hair Care
July 2010 ~ Dr. Ganzhorn
August 2010 ~ Moose Lodge 999
August 2010 ~ Mackinac Straits Hospital
September 2010 ~ Sault Lions Club
October 2010 ~ Gateway Lanes
October 2010 ~ Newberry Firemen
November 2010 ~ Child Protection Roundtable
November 2010 ~ Days Inn
December 2010 ~ Lynn Kihm
January 2011 ~ Dr. O’Connor
January 2011 ~ Alpine Chocolat Haus
February 2011 ~ Maureen O’Shea, CNCP
February 2011 ~ Newberry Bottling
February 2011 ~ Goodfellows
March 2011 ~ War Memorial Hospital
April 2011 ~ Elks Lodge #1705
April 2011 ~ Thrivent Financial for Lutherans
May 2011 ~ Parent Coalition of the EUP—St. Ignace
May 2011 ~ Bill Scheere
May 2011 ~ EUP Great Start Parent Coalition
July 2011 ~ Helen Newberry Joy Hospital
November 2011 ~ Dr. Slater
December 2011 ~ Shelva Johnson